

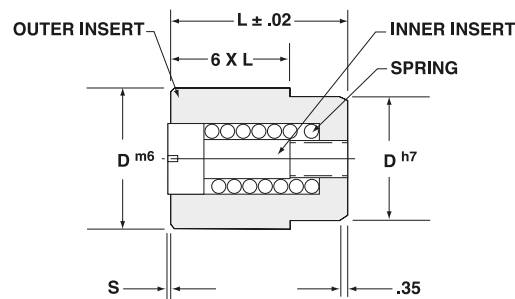
# FRONT-REMOVABLE DATE STAMPS

## ECONOMY SERIES "E"

- > Material: 420 Stainless; 1.4021;46Hrc+/- 2
- > Provides part traceability
- > Maximum working Temperature: 300F
- > Markings are Laser etched.
- > Insert changes can be done from parting line
- > Press fit installation required Interchangeable with DME Front
- > Removable or Progressive C-series



D	L	12 Months w/arrow	12 Months w arrow/year	Years/ arrow**	Days/ arrow	Shifts/ arrow	Numeral 0-9	Blank/ arrow
4	8	M408	M04 x __	A04 x __	DA04	SH04		BLB408
5	8	M508	M05 x __	A05 x __	DA05	SH05		BLB508
6	8	M608	M06 x __	A06 x __	DA06	SH06	FOR0006	BLB608
8	10	M810	M08 x __	A08 x __	DA08	SH08	FOR0008	BLB810
10	12	M1012	M10 x __	A10 x __	DA10	SH10	FOR0010	BLB1012
12	14	M1214	M12 x __	A12 x __	DA12	SH12	FOR0012	BLB1214
16	14	M1614	M16 x __	A16 x __	DA16	SH16	FOR0016	BLB1614
20	16	M2016	M20 x __	A20 x __	DA20	SH20	FOR0020	BLB2016



NOTE: Press fit installation required in mold.

- > \* When ordering add the year required to the part number (M05 x 07)
- > \*\*When ordering specify beginning year

## REPLACEMENT INSERTS & BODIES

### Dimensional Data

D(mm) Dia.	E (mm)	L(mm) Length	S(mm) Etch Depth	Tolerance(mm)	
				m6	h7
4	2,1	8	0.203	+0,12 to +,004	0 to -,012
5	3,1	8	0.203	+0,12 to +,004	0 to -,012
6	3,1	8	0.203	+0,12 to +,004	0 to -,012
8	4,4	10	0.254	+0,15 to +,006	0 to -,015
10	5,2	12	0.356	+0,15 to +,006	0 to -,015
12	6,2	14	0.356	+0,18 to +,007	0 to -,018
16	8,2	14	0.356	+0,18 to +,007	0 to -,018
20	11	16	0.356	+0,21 to +,008	0 to ,021

### Replacement Inserts (with springs)

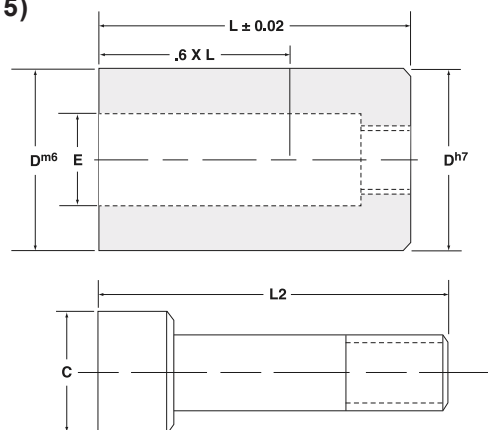
Arrow Only	Arrow & Year*	C	L2
AR04	AY04	2,1	8
AR05	AY05	3,1	8
AR06	AY06	3,1	8
AR08	AY08	4,4	10
AR10	AY10	5,2	12
AR12	AY12	6,2	14
AR16	AY16	8,2	14
AR20	AY20	11	16

### REPLACEMENT BODIES

D	L	12 Months	Days	Shifts	Blank
4	8	MB04	DB04	SB04	BL04
5	8	MB05	DB05	SB05	BL05
6	8	MB06	DB06	SB06	BL06
8	10	MB08	DB08	SB08	BL08
10	12	MB10	DB10	SB10	BL10
12	14	MB12	DB12	SB12	BL12
16	14	MB16	DB16	SB16	BL16
20	16	MB20	DB20	SB20	BL20

### Replacement Springs (pkg of 5)

D(mm) Diameter	Cat. Number
4	RS04
5	RS05
6	RS06
8	RS08
10	RS10
12	RS12
16	RS16
20	RS20



NOTE: Press fit installation required in mold.

- > \* When ordering add the year required to the part number